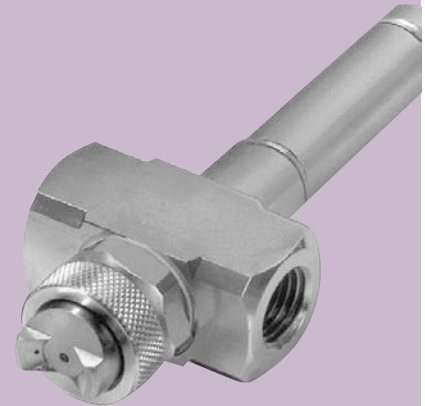
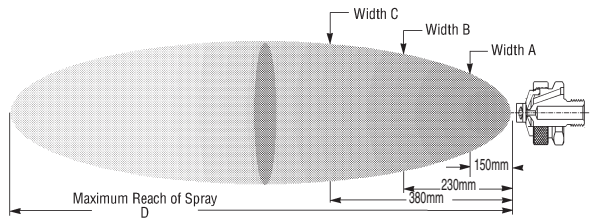


XA EF

Pressure-fed/External Mix/Flat Fan

DESIGN FEATURES

- External mix: allows spraying of viscous materials
- Variable atomization
- Moderate spray angle (60°- 90°)
- Precise metering of the liquid flow rate



1/4"XA EF 150 E
XA 00 Body; E Hardware

XA EF Set-up Flow Rates and Dimensions

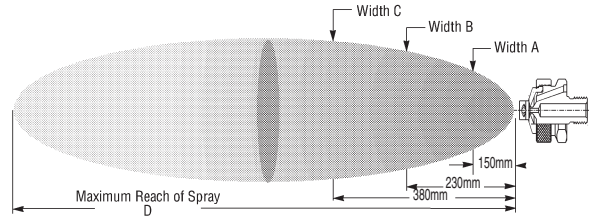
Pressure-fed, External Mix, Flat Fan Spray Pattern, 1/8" and 1/4" Pipe Sizes, BSP or NPT

Pipe Size	Spray Set-up Number	Fluid and Air Cap Numbers	0.2 Bar Liquid			0.3 Bar Liquid			0.7 Bar Liquid			1.5 Bar Liquid			3.0 Bar Liquid			Spray Dimensions						
			Air (bar)	l/h	Nm ³ /h	Air (bar)	l/h	Nm ³ /h	Air (bar)	l/h	Nm ³ /h	Air (bar)	l/h	Nm ³ /h	Air (bar)	l/h	Nm ³ /h	air	liquid	A (mm)	B (mm)	C (mm)	D (m)	
1/8	EF 050	Fluid Cap FC7 & Air Cap AC1001	0.4		1.32	0.4	1.32	0.4	1.50	0.6	1.68	0.7	2.04	1.1	2.04	0.7	2.04	0.4	0.3	200	280	330	1.2	
			0.4		1.50	0.4	1.50	0.6	1.68	0.7	2.04	1.1	2.70	1.1	2.70	0.6	1.5	230	300	400	1.8			
			0.5	3	1.62	0.6	1.68	0.7	2.04	0.9	2.40	1.1	2.70	1.8	3.72	1.4	1.5	250	300	410	2.7			
			0.6		1.68	0.6	2.04	0.7	2.40	0.9	2.40	1.4	3.24	2.5	4.74	1.4	2.0	280	350	460	2.6			
																			1.4	3.0	300	380	510	2.7
1/8	EF 100	Fluid Cap FC7 & Air Cap AC1003	0.2		1.51	0.4	1.58	0.7	1.87	1.1	2.38	1.8	3.23	3.5	4.38	0.2	0.2	90	150	230	0.9			
			0.4		1.58	0.7	1.87	1.1	2.38	1.8	3.23	3.5	5.10	1.1	5.10	1.1	0.2	90	150	230	1.2			
			0.7	3	1.87	1.1	2.38	1.4	2.72	1.8	3.23	2.8	4.42	4.9	7.14	1.4	0.4	100	150	230	1.2			
			1.1		2.38	1.4	2.72	1.8	3.23	2.1	3.56	3.5	5.10	5.3	7.65	1.8	0.7	120	180	250	1.5			
			1.4		2.72	1.8	3.23	2.1	3.56	2.8	4.42	4.2	6.12	5.6	8.34	2.8	1.4	130	180	280	1.8			
			1.8		3.23	2.1	3.56	2.8	4.42	3.5	5.10	5.6	8.34	6.3	9.54	4.9	2.8	150	180	240	2.4			
2.1		3.56	2.8	4.42	3.5	5.10	4.2	5.10	5.6	8.34	6.3	9.54	4.9	2.8	150	180	240	2.4						
1/8	EF 150	Fluid Cap FC4 & Air Cap AC1001	0.4		1.32	0.4	1.32	0.6	1.68	0.7	2.04	1.1	2.70	1.1	2.70	0.7	0.3	280	330	400	1.5			
			0.6		1.68	0.7	2.04	0.7	2.04	1.4	3.24	2.1	3.24	1.4	3.24	0.7	1.5	300	380	480	2.1			
			0.7	5	2.04	1.1	2.70	1.4	3.24	2.1	4.26	2.1	4.26	2.1	4.26	1.4	1.5	350	430	560	2.4			
			1.1		2.70	1.4	3.24	2.1	4.26	2.5	4.74	2.5	4.74	2.5	4.74	1.8	2.0	380	460	580	2.7			
																			1.8	3.0	410	480	660	2.9
1/4	EF 200	Fluid Cap FC4 & Air Cap AC1003	0.4		1.58	0.7	1.87	1.1	2.38	1.4	2.72	2.1	3.56	3.5	4.92	0.4	0.2	80	140	220	1.0			
			0.7		1.87	1.1	2.38	1.4	2.72	1.8	3.23	2.8	4.42	4.2	5.10	1.4	0.2	90	150	220	1.7			
			1.1	5	2.38	1.4	2.72	1.8	3.23	2.1	3.56	3.5	5.10	4.9	6.12	1.8	0.4	100	170	230	1.8			
			1.4		2.72	1.8	3.23	2.1	3.56	2.8	4.42	4.2	6.12	5.3	7.62	2.1	0.7	130	190	290	2.1			
			1.8		3.23	2.1	3.56	2.8	4.42	3.5	5.10	4.9	7.14	6.3	9.54	3.5	1.4	130	220	300	2.4			
			2.1		3.56	2.8	4.42	3.5	5.10	4.2	5.10	6.3	9.54	6.7	9.54	5.3	2.8	150	220	300	2.4			
2.8		4.42	3.5	5.10	4.2	5.10	4.2	6.12	6.3	9.54	6.7	9.54	5.3	2.8	150	190	250	3.0						
1/4	EF 250	Fluid Cap FC3 & Air Cap AC1001	0.4		1.50	0.4	1.50	0.4	1.50	0.7	2.04	1.1	2.70	1.1	2.70	0.6	0.3	350	480	610	1.8			
			0.5		1.65	0.6	1.68	0.6	1.68	0.9	2.40	1.4	3.24	1.8	3.72	0.6	0.7	350	480	630	1.5			
			0.6	9	1.68	0.7	2.04	0.7	2.04	0.9	2.40	1.1	2.70	2.1	4.26	1.4	1.5	380	480	630	1.8			
			0.7		2.04	0.7	2.04	0.9	2.40	1.1	2.40	1.4	3.24	2.5	4.74	1.7	1.5	410	510	660	2.1			
																			1.4	1.5	430	530	660	2.4
																			1.8	2.0	410	510	690	2.7
1/4	EF 300	Fluid Cap FC3 & Air Cap AC1003	0.7		1.87	1.1	2.38	1.4	2.72	2.1	3.56	3.5	5.10	4.9	5.10	0.7	0.2	130	170	250	1.2			
			1.1		2.38	1.4	2.72	1.8	3.23	2.8	4.42	4.2	6.12	5.6	6.12	1.8	0.2	130	170	250	1.8			
			1.4	9	2.72	1.8	3.23	2.1	3.56	2.8	4.42	4.2	6.12	5.3	7.62	2.5	1.4	140	200	320	1.8			
			1.8		3.23	2.1	3.56	2.8	4.42	3.5	5.10	4.9	7.14	6.3	9.54	4.2	0.7	140	190	300	2.3			
			2.1		3.56	2.8	4.42	3.5	5.10	4.2	5.10	6.3	9.54	6.3	9.54	5.3	2.8	140	200	360	3.0			
			2.8		4.42	3.5	5.10	4.2	5.10	4.2	6.12	6.3	9.54	6.3	9.54	5.3	2.8	170	200	300	4.0			
3.5		5.10	4.2	6.12	4.9	6.12	4.9	7.14	6.3	9.54	7.0	10.56	5.3	2.8	170	200	300	4.0						

Standard Materials: Nickel-plated Brass, 303 Stainless Steel and 316 Stainless Steel. See chart on page 21 for complete list

AIR ATOMIZING

TO ORDER: specify spray set-up #, pipe size, body style, hardware and mounting assemblies, and material. See page 82.



XA EF Set-up Flow Rates and Dimensions
 Pressure-fed, External Mix, Flat Fan Spray Pattern, 1/8" and 1/4" Pipe Sizes, BSP or NPT

Pipe Size	Spray Set-up Number	Fluid and Air Cap Numbers	0.2 Bar Liquid			0.3 Bar Liquid			0.7 Bar Liquid			1.5 Bar Liquid			3.0 Bar Liquid			Spray Dimensions					
			Air (bar)	l/h	Nm ³ /h	Air (bar)	l/h	Nm ³ /h	Air (bar)	l/h	Nm ³ /h	Air (bar)	l/h	Nm ³ /h	Air (bar)	l/h	Nm ³ /h	air	Bar liquid	A (mm)	B (mm)	C (mm)	D (m)
1/8 OR 1/4	EF 350	Fluid Cap FC6 & Air Cap AC1002	0.6		5.46	0.7		6.12	1.4		9.36	2.1		12.6	3.2		17.1	1.4	0.3	330	380	480	3.8
			0.7	13	6.12	1.1	16	7.80	2.1	25	12.6	2.8	37	15.6	4.2	52	21.6	2.1	0.7	330	400	560	4.3
			1.1		7.80	1.8	11.0	2.5	14.1	3.5	18.6	5.3	25.8	4.2	1.5	380	480	660	4.6				
			1.4		9.36	2.1	12.6	2.8	15.6	4.2	21.6	5.6	27.3	3.9	2.0	410	510	690	4.6				
	EF 400	Fluid Cap FC6 & Air Cap AC1004	0.7		5.10	1.0		6.12	1.4		6.96	1.8		8.34	2.5		10.7	1.4	0.2	130	190	250	1.7
			1.0	13	6.12	1.4	16	6.96	1.8	25	8.34	2.1	37	9.36	3.5	52	12.7	1.8	0.2	130	190	250	2.7
			1.4		6.96	1.8	8.34	2.1	9.36	2.5	10.7	2.8	13.6	3.9	15.3	2.1	0.4	150	190	280	3.0		
			1.8		8.34	2.1	9.36	2.5	10.7	2.8	13.6	3.5	16.0	4.2	0.7	150	220	280	3.5				
			2.1		9.36	2.8	11.7	3.5	13.6	4.2	16.0	4.9	18.7	4.9	1.4	170	230	360	3.7				
			2.8		11.7	3.5	13.6	4.2	16.0	4.9	18.7	5.6	21.6	6.3	2.0	170	230	370	4.3				
			3.5		13.6	4.2	16.0	4.9	18.7	5.6	21.6	6.3	24.7	6.3	2.8	170	220	320	4.9				
	EF 450	Fluid Cap FC2 & Air Cap AC1002	0.6		5.46	0.7		6.12	1.1		7.80	2.5		14.1	3.5		18.6	1.1	0.2	330	380	510	3.5
1.1			18	7.80	1.4	22	9.36	1.8	33	11.0	3.2	48	17.1	4.6	68	22.8	1.8	0.7	350	480	640	3.0	
1.4				9.36	1.8	11.0	2.5	14.1	3.9	19.8	6.0	28.5	4.2	1.5	380	460	640	3.8					
		1.8		11.0	2.1	12.6	2.8	15.6	4.2	21.6	6.7	31.5	4.9	3.0	330	430	610	4.3					
																			300	430	580	4.9	
																			330	430	610	5.2	
																			330	430	600	4.0	
EF 500	Fluid Cap FC2 & Air Cap AC1004	0.7		5.10	1.4		6.96	1.8		8.34	2.8		11.7	3.5		13.9	0.7	0.4	150	190	270	2.1	
		1.0	18	6.12	1.8	22	6.96	2.1	33	8.34	2.1	48	12.7	4.2	68	16.5	1.8	0.7	150	190	270	3.0	
		1.4		6.96	2.1	9.36	2.5	10.7	3.5	13.6	4.9	18.7	5.6	21.6	6.3	2.1	150	220	330	3.0			
		1.8		8.34	2.5	10.7	2.8	11.7	4.2	13.6	4.9	16.0	5.3	1.4	150	220	360	3.8					
		2.1		9.36	2.8	11.7	3.5	13.6	4.9	16.0	5.6	18.7	5.6	1.4	170	250	370	4.0					
		2.8		11.7	3.5	13.6	4.2	16.0	4.9	18.7	5.6	21.6	6.3	2.1	170	250	370	4.9					
		3.5		13.6	4.2	16.0	4.9	18.7	5.6	21.6	6.3	24.7	6.6	2.8	180	230	360	5.8					
EF 550	Fluid Cap FC1 & Air Cap AC1002	0.7		6.12	1.1		7.80	1.8		11.0	3.2		17.1	5.3		25.8	2.1	0.3	400	560	760	3.0	
		1.1	36	7.80	1.4	45	9.36	2.1	68	12.6	3.5	100	18.6	6.0	141	28.5	2.8	0.7	460	580	810	4.0	
		1.4		9.36	2.1	12.6	2.8	15.6	4.9	21.3	6.7	27.3	7.0	33.0	4.6	1.5	430	530	760	4.9			
		1.8		11.0	2.5	14.1	3.2	17.1	5.9	21.3	6.7	27.3	7.0	3.0	380	510	660	5.8					
																			400	560	790	4.3	
																			430	530	760	4.9	
																			380	510	660	5.8	
																			440	640	840	4.3	
																			410	560	790	5.8	
EF 600	Fluid Cap FC1 & Air Cap AC1004	1.0		6.12	1.8		8.34	2.5		10.7	3.2		12.7	3.9		15.3	1.0	0.2	150	200	250	2.7	
		1.4	36	6.96	2.1	45	8.34	2.5	68	9.36	2.8	100	11.7	3.5	141	16.5	2.1	0.2	150	220	290	3.0	
		1.8		8.34	2.5	10.7	3.2	12.7	3.9	14.8	4.6	18.7	5.6	21.6	6.3	2.1	150	220	330	3.0			
		2.1		9.36	2.8	11.7	3.5	13.6	4.2	16.0	4.9	18.7	5.6	1.4	180	240	360	3.5					
		2.5		10.7	3.2	12.7	4.2	16.0	4.9	18.7	5.6	21.6	6.3	1.4	200	280	390	3.7					
		2.8		11.7	3.5	13.6	4.9	18.7	5.6	21.6	6.3	24.7	6.3	2.1	200	280	390	4.3					
		3.5		13.6	4.2	16.0	5.6	21.6	6.3	24.7	7.0	27.2	7.0	2.8	180	240	380	5.9					
EF 650	Fluid Cap FC8 & Air Cap AC1005	1.8		14.1	1.8		14.1	2.5		18.0	3.9		24.6	5.3		31.2	1.8	0.2	150	200	290	3.0	
		2.1	36	15.6	2.1	45	15.6	2.8	68	18.0	4.2	100	19.8	4.2	141	26.7	2.8	0.2	150	200	300	3.4	
		2.5		18.0	2.5	18.0	3.2	21.3	4.6	28.8	6.3	38.4	6.3	41.1	4.6	1.5	150	200	300	4.0			
		2.8		19.8	2.8	19.8	3.5	22.8	4.9	24.6	5.3	33.9	6.0	1.5	170	220	320	4.3					
		3.2		21.3	3.2	21.3	3.9	24.6	5.3	26.7	5.6	36.0	6.3	2.0	170	220	340	4.6					
		3.5		22.8	3.5	22.8	4.2	26.7	5.6	31.2	6.3	41.1	7.0	2.8	170	230	330	4.7					
		4.2		26.7	4.2	26.7	4.9	31.2	6.3	36.0	7.0	41.1	7.0	3.5	170	230	340	5.5					
EF 700	Fluid Cap FC9 & Air Cap AC1005	2.1		15.6	2.8		19.8	3.9		24.6	4.9		31.2	6.3		39.6	2.1	0.2	170	240	340	3.5	
		2.5	64	18.0	3.2	78	21.3	4.2	119	26.7	5.3	175	33.9	6.3	141	36.0	3.2	0.2	180	240	360	4.3	
		2.8		19.8	3.5	22.8	4.6	28.8	5.6	38.4	6.3	41.1	7.0	41.1	7.0	3.9	0.3	180	250	360	4.9		
		3.2		21.3	3.9	24.6	4.9	31.2	6.0	36.0	6.3	41.1	7.0	4.9	0.7	180	250	360	5.5				
		3.5		22.8	4.2	26.7	5.3	33.9	6.3	41.1	7.0	41.1	7.0	5.9	1.5	200	250	380	5.5				
		4.2		26.7	4.9	31.2	5.6	36.0	6.3	41.1	7.0	41.1	7.0	4.9	1.0	180	250	380	5.8				
		4.9		31.2	5.6	36.0	6.3	41.1	7.0	41.1	7.0	41.1	7.0	5.6	1.5	200	250	380	6.1				
EF 750	Fluid Cap FC5 & Air Cap AC1005	2.8		19.8	3.5		22.8	4.6		28.8	5.6		36.0	7.0		41.1	2.8	0.2	190	250	360	4.6	
		3.2	102	21.3	3.9	125	24.6	4.9	192	31.2	6.0	280	38.4	6.3	141	41.1	3.9	0.2	200	250	370	4.9	
		3.5		22.8	4.2	26.7	5.3	33.9	6.3	41.1	7.0	41.1	7.0	41.1	7.0	4.6	0.3	200	250	370	5.2		
		3.9		24.6	4.6	28.8	5.6	36.0	6.3	41.1	7.0	41.1	7.0	5.3	0.7	220	270	380	5.5				
		4.2		26.7	4.9	31.2	6.0	38.4	6.3	41.1	7.0	41.1	7.0	5.6	1.0	220	270	410	5.5				
		4.6		28.8	5.3	33.9	6.3	41.1	7.0	41.1	7.0	41.1	7.0	5.6	1.5	220	270	410	5.8				
		4.9		31.2	5.6	36.0	6.3	41.1	7.0	41.1	7.0	41.1	7.0	6.0	1.5	220	270	410	6.1				

Standard Materials: Nickel-plated Brass, 303 Stainless Steel and 316 Stainless Steel. See chart on page 21 for complete list

AIR ATOMIZING

 CALL 413-772-2166
 Call for the name of your nearest BETE representative.