

TD

WHIRL

Twist & Dry™ Hollow Cone

DESIGN FEATURES

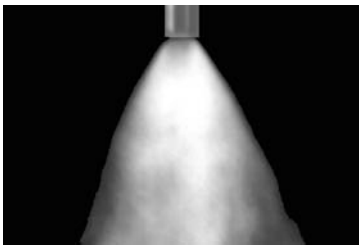
- Patent pending locking mechanism for quick and easy change-out and maintenance
- Female threaded or butt weld pipe connections
- Easy assembly, no special tools required
- Orifice size: 0.864mm through 3.99mm
- Interchangeable swirl and orifice discs for variable patterns and flow rates

SPRAY CHARACTERISTICS

- Hollow Cone
- **Flow rates:** 35.3 to 5970 l/h
- **Spray angle:** 50°, 55°, 60°, 65°, 70°, 75°, 80°



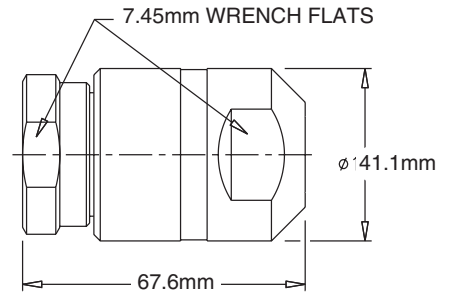
Female



70° Hollow Cone



Cutaway view of carrier showing lugs and BETE's unique locking design



TD Flow Rates and Dimensions

Hollow Cone, 50° to 80° Spray Angles, 1/4", 3/8", 1/2" and 3/4" Pipe Size NPT, BSP or Welded

Female Pipe Size	Nozzle Number	Spray Angle	Swirl	Orifice mm	K Factor	LITERS PER HOUR @ BAR											Pipe size	Wt. (g)	
						15 bar	35 bar	50 bar	70 bar	90 bar	100 bar	120 bar	150 bar	175 bar	200 bar	275 bar			350 bar
1/4" OR	TD2-34	70°	SW2	0.864	9.12	35.3	53.9	64.5	76.3	86.5	91.2	99.9	112	121	129	151	171	1/4"	539
	TD1-37	80°	SW1	0.940															
3/8" OR	TD2-40	75°	SW2	1.02	11.4	44.1	67.4	80.6	95.3	108	114	125	140	151	161	189	213	3/8"	524
	TD1-49	85°	SW1	1.24															
1/2" OR	TD4-34	60°	SW4	0.864	13.7	53.0	80.9	96.7	114	130	137	150	167	181	193	227	256	1/2"	510
	TD3-40	70°	SW3	1.02															
3/4" OR	TD5-34	50°	SW5	0.864	16.0	61.8	94.4	113	133	151	160	175	195	211	226	265	298	3/4"	482
	TD4-40	65°	SW4	1.02															
3/4" OR	TD4-43	65°	SW4	1.09	18.2	70.6	108	129	153	173	182	200	223	241	258	302	341	3/4"	510
	TD3-49	75°	SW3	1.24															
3/4" OR	TD6-37	50°	SW6	0.940	20.5	79.4	121	145	172	195	205	225	251	271	290	340	384	3/4"	482
	TD5-40	60°	SW5	1.02															
3/4" OR	TD4-46	70°	SW4	1.17	22.8	88.3	135	161	191	216	228	250	279	301	322	378	426	3/4"	482
	TD3-55	75°	SW3	1.40															
3/4" OR	TD6-40	50°	SW6	1.02	25.1	97.1	148	177	210	238	251	275	307	332	355	416	469	3/4"	482
	TD5-43	60°	SW5	1.09															
3/4" OR	TD4-52	70°	SW4	1.32	25.1	97.1	148	177	210	238	251	275	307	332	355	416	469	3/4"	482
	TD5-49	60°	SW5	1.24															
3/4" OR	TD4-58	70°	SW4	1.47	25.1	97.1	148	177	210	238	251	275	307	332	355	416	469	3/4"	482
	TD3-67	80°	SW3	1.70															

Flow Rate (LPH) = K √BAR

Standard Materials: 316 Stainless Steel, Tungsten Carbide. Other materials available.

©2004 BETE Fog Nozzle, Inc., all rights reserved

TO ORDER: specify pipe size, connection type, nozzle number, and material.

TD Flow Rates and Dimensions

Hollow Cone, 50° to 80° Spray Angles, 1/4", 3/8", 1/2" and 3/4" Pipe Size NPT, BSP or Welded

Female Pipe Size	Nozzle Number	Spray Angle	Orifice Swirl mm	K Factor	LITERS PER HOUR @ BAR												Pipe Size	Wt. (g)
					15 bar	35 bar	50 bar	70 bar	90 bar	100 bar	120 bar	150 bar	175 bar	200 bar	275 bar	350 bar		
1/4" OR 3/8" OR 1/2" OR 3/4"	TD6-46	55°	SW6 1.17	27.4	106	162	193	229	259	273	300	335	362	387	453	512	1/4	539
	TD5-52	65°	SW5 1.32															
	TD4-61	75°	SW4 1.55															
	TD3-70	80°	SW3 1.78															
	TD6-52	55°	SW6 1.32	31.9	124	189	226	267	303	319	349	391	422	451	529	597		
	TD5-58	65°	SW5 1.47															
	TD4-70	75°	SW4 1.78															
	TD7-49	50°	SW7 1.24	36.5	141	216	258	305	346	365	399	447	482	516	605	682		
	TD6-55	60°	SW6 1.40															
	TD5-64	70°	SW5 1.63															
	TD4-76	80°	SW4 1.93															
	TD7-52	50°	SW7 1.32	41.0	159	243	290	343	389	410	449	502	543	580	680	767		
	TD6-61	60°	SW6 1.55															
	TD5-70	70°	SW5 1.78															
	TD7-58	55°	SW7 1.47	45.6	177	270	322	381	432	456	499	558	603	645	756	853		
	TD6-64	65°	SW6 1.63															
	TD5-76	75°	SW5 1.93															
	TD4-91	80°	SW4 2.31															
	TD7-61	55°	SW7 1.55	50.1	194	297	355	419	476	501	549	614	663	709	831	938		
	TD6-70	65°	SW6 1.78															
TD5-82	75°	SW5 2.08																
TD7-64	55°	SW7 1.63	54.7	212	324	387	458	519	547	599	670	724	773	907	1020			
TD6-76	65°	SW6 1.93																
TD5-88	75°	SW5 2.24																
TD8-67	50°	SW8 1.70	68.4	265	404	483	572	649	684	749	837	904	967	1130	1280			
TD7-76	60°	SW7 1.93																
TD6-88	70°	SW6 2.24																
TD5-109	80°	SW5 2.77																
TD8-76	50°	SW8 1.93	82.0	318	485	580	686	778	820	899	1010	1090	1160	1360	1540			
TD7-85	65°	SW7 2.16																
TD6-103	75°	SW6 2.62																
TD8-82	55°	SW8 2.08	95.7	371	566	677	801	908	957	1050	1170	1270	1350	1590	1790			
TD7-97	65°	SW7 2.46																
TD6-115	75°	SW6 2.92																
TD9-82	50°	SW9 2.08	109	424	647	773	915	1040	1090	1200	1340	1450	1550	1810	2050			
TD8-91	60°	SW8 2.31																
TD7-106	70°	SW7 2.69																
TD6-127	80°	SW6 3.23																
TD9-88	50°	SW9 2.24	123	477	728	870	1030	1170	1230	1350	1510	1630	1740	2040	2300			
TD8-100	60°	SW8 2.54																
TD7-118	70°	SW7 3.00																
TD6-142	80°	SW6 3.61																
TD9-94	55°	SW9 2.39	137	530	809	967	1140	1300	1370	1500	1680	1810	1930	2270	2560			
TD8-106	65°	SW8 2.69																
TD7-127	75°	SW7 3.23																
TD9-106	55°	SW9 2.69	160	618	944	1130	1340	1510	1600	1750	1950	2110	2260	2650	2980			
TD8-121	65°	SW8 3.07																
TD7-145	75°	SW7 3.68																
TD10-103	50°	SW10 2.62	182	706	1080	1290	1530	1730	1820	2000	2230	2410	2580	3020	3410			
TD9-115	60°	SW9 2.92																
TD8-133	70°	SW8 3.38																
TD10-118	55°	SW10 3.00	205	794	1210	1450	1720	1950	2050	2250	2510	2710	2900	3400	3840			
TD9-127	60°	SW9 3.23																
TD8-145	70°	SW8 3.68																
TD9-136	65°	SW9 3.45	228	883	1350	1610	1910	2160	2280	2500	2790	3020	3220	3780	4260			
TD8-157	75°	SW8 3.99																
TD9-148	65°	SW9 3.76	251	971	1480	1770	2100	2380	2510	2750	3070	3320	3550	4160	4690			
TD10-136	60°	SW10 3.45	274	1060	1620	1930	2290	2590	2740	3000	3350	3620	3870	4540	5120			
TD9-154	70°	SW9 3.91																
TD10-151	60°	SW10 3.84	296	1150	1750	2100	2480	2810	2960	3250	3630	3920	4190	4910	5540			
TD10-157	65°	SW10 3.99	319	1240	1890	2260	2670	3030	3190	3500	3910	4220	4510	5290	5970			

Flow Rate (LPH) = $K \sqrt{BAR}$

Standard Materials: 316 Stainless Steel, Tungsten Carbide. Other materials available.



CALL 1-413-772-2166
Call for the name of your nearest BETE representative.