

ScrubMate™



ScrubMate™ Rotating Washing Nozzles

DESIGN FEATURES

- Compact design fits through small openings. O.D.: SM50 - 1.93" (49mm), SM75 - 2.83" (72mm), SM30 - 1.38" (35mm)
- Superior cleaning at low pressures and low flow rates for greater economy
- Self cleaning
- Patented mist reducing head
- No ball bearings to corrode

SPRAY CHARACTERISTICS

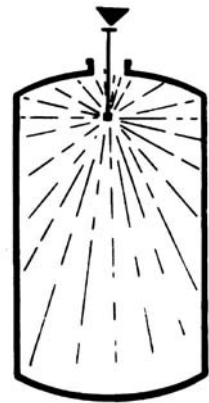
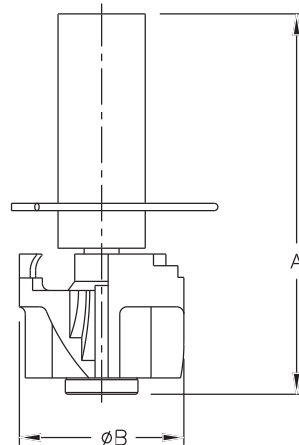
- High impact scrubbing action
 - Slow rotation speed provides better cleaning
 - Wide coverage
- Flow rates:** 21 to 76 gpm
66 to 283 l/min



ScrubMate™ SM50

ScrubMate™ Coverage Chart When spraying at 40 PSI, 3 BAR

Pipe Size	Nozzle Number	Scrubbing Diameter (ft.)	Rinsing Diameter (ft.)	Scrubbing Diameter (mm)	Rinsing Diameter (mm)
1"	SM50	7.0	14.0	2100	4200
1 1/2"	SM75	9.0	18.0	2700	5400



ScrubMate™ Flow Rates and Dimensions

ScrubMate™ 360°, 1" and 1 1/2" Pipe Sizes, Sanitary Connection

Tube O.D.	Nozzle No.	K Factor	GALLONS PER MINUTE @ PSI					Approximate Free Passage Dia. (in.)	Dim. (in.)		Wt. (oz.)	K Factor	LITERS PER MINUTE @ BAR					Approximate Free Passage Dia. (mm)	Dim. (mm)		Wt. (kg)
			20 PSI	30 PSI	40 PSI	50 PSI	60 PSI		A	B			1 bar	2 bar	3 bar	3.5 bar	4 bar		A	B	
1	SM50	4.585	21	25	29	32	36	0.110	4.9	1.93	6.5	66.09	66	93	114	124	132	2.794	124	49	0.19
1 1/2	SM75	9.803	44	54	62	69	76	0.185	6.5	2.83	15.5	141.3	141	200	245	264	283	4.699	165	72	0.44

$$\text{Flow Rate (GPM)} = K \sqrt{\text{PSI}}$$

$$\text{Flow Rate (l/min)} = K \sqrt{\text{bar}}$$

Standard Materials: Body/Shaft - 316 Stainless Steel, Rotor - Acetal-CoPolymer or PTFE.

SPECIAL PURPOSE

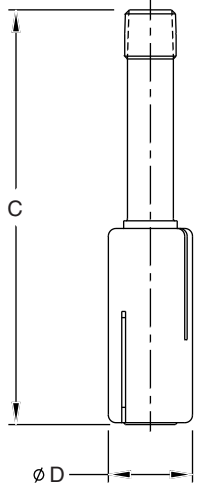
TO ORDER: specify pipe size, connection type, nozzle number, spray angle, and material.



ScrubMate™ SM75



ScrubMate™ SM30



SPECIAL PURPOSE

CALL 413-772-2166
Call for the name of your nearest BETE representative.

ScrubMate™ Flow Rates and Dimensions
ScrubMate™ 360°, 1/2" Pipe Sizes

Male Pipe Size	Nozzle No.	K Factor	GALLONS PER MINUTE @ PSI					Approximate Free Passage Dia. (in.)	Dim. (in.)			Wt. (oz.)	K Factor	LITERS PER MINUTE @ BAR					Approximate Free Passage Dia. (mm)	Dim. (mm)		Wt. (kg)
			20 PSI	30 PSI	40 PSI	50 PSI	60 PSI		A	B	1 bar			2 bar	3 bar	3.5 bar	4 bar	A		B		
1/2	SM30	5.14	23	28	32	36	39	0.055	6.8	1.38	9.5	72.95	73	103	126	136	146	1.397	175	34	0.27	

$Flow\ Rate\ (GPM) = K \sqrt{PSI}$

$Flow\ Rate\ (l/min) = K \sqrt{bar}$

Standard Materials: Body/Shaft - 316 Stainless Steel, Rotor - Acetal-CoPolymer or PTFE.