

SA

High-Flow Air Atomizing

DESIGN FEATURES

- A two-fluid nozzle using either steam or air as the atomizing fluid
- Three-stage atomization for highest performance
- Designed for high reliability in extremely hostile environments
- Efficient design reduces compressed air consumption
- U.S. Patent #5,240,183

SPRAY CHARACTERISTICS

- Spray patterns:** Full Cone and Flat Fan
Spray Angles: 20° to 90°
 (Other angles available by special order)
Flow rates: 2.0 to 80 l/min

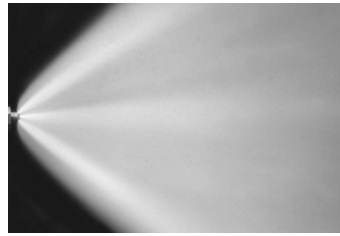


1 1/2" SA (Set-up #) - A - 00

AIR ATOMIZING



Narrow Round 20°



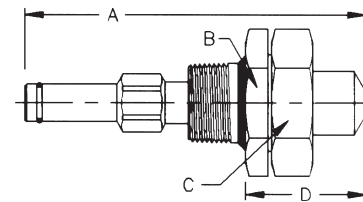
Wide Round 90°



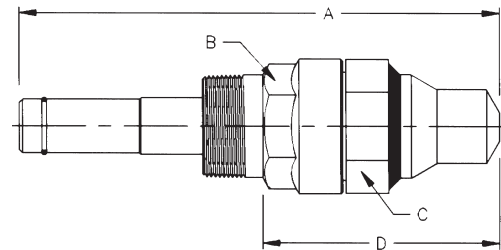
Flat Fan 60°

SA Spray Set-up, Spiral Tip and Dimensions

Pipe Size	Spray Set-up No.	Spiral Tip No.	Spray Angle	Spray Type	Approx. Free Pass. Dia. (mm)	Pipe Size	Dimensions (mm)				Wt. (Kg)
							A	B	C	D	
1"	SA 101	14	20°	Narrow Round	4.83	1	148	50.8	50.8	50.8	0.64
	SA 308		90°	Wide Round	2.69						
	SA 310		60°	Round	2.69						
	SA 402	20	90°	Flat Fan	3.30						
	SA 404		60°		3.30						
	SA 103	20	20°	Narrow Round	7.14						
SA 307	90°		Wide Round	3.30							
SA 309	60°		Round	3.30							
SA 401	20		90°	Flat Fan	3.30						
SA 403		60°	3.30								
1 1/2"	SA 2100	28	20°	Narrow Round	4.83	1 1/2	229	50.8	55.6	113	1.5
	SA 2310		90°	Wide Round	5.41						
	SA 2303		60°	Round	5.41						



1 SA (Set-up #) - A - 00



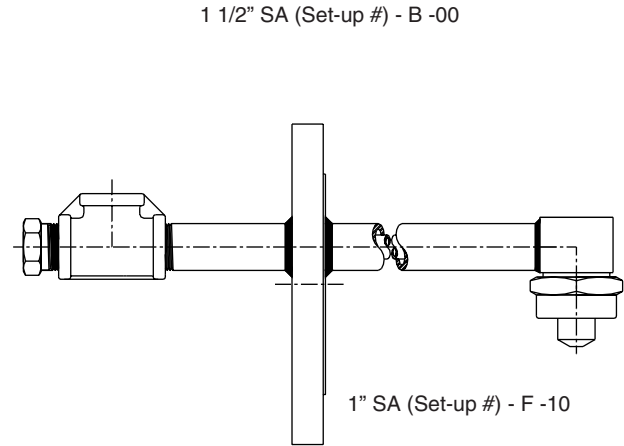
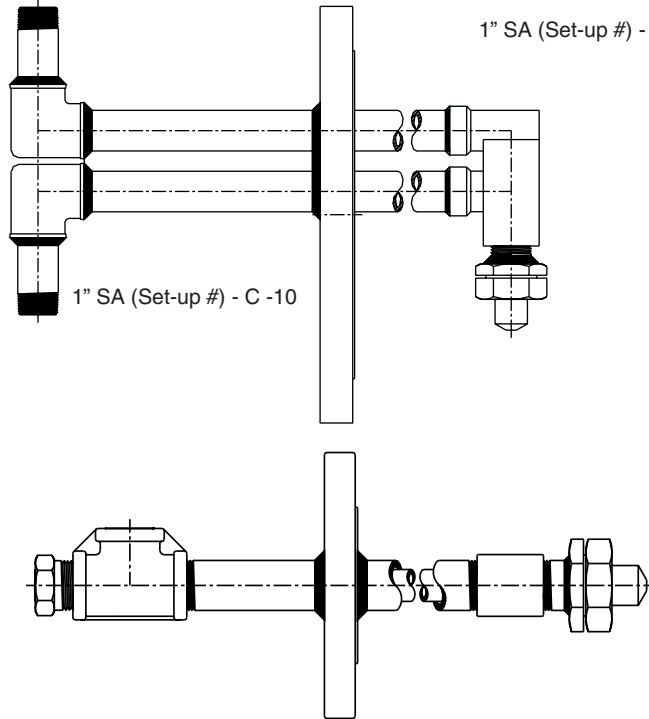
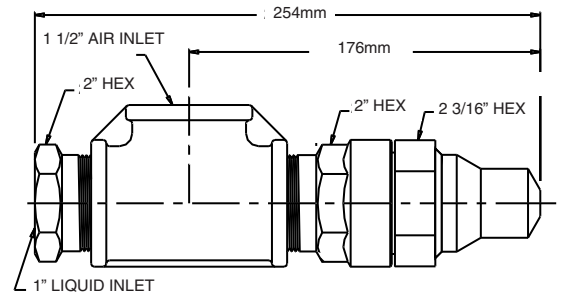
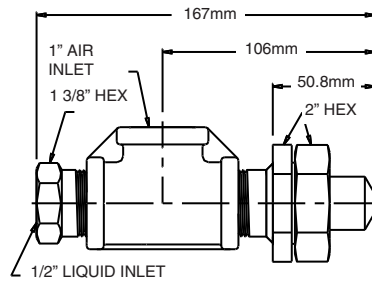
1 1/2" SA (Set-up #) - A - 00

Standard Materials: 316 Stainless Steel with Cobalt Alloy 6 wear components.

TO ORDER: specify pipe size, spray set-up #, hardware and material.

The SA can be configured to fit any installation requirement. The examples shown are just a few of the custom assemblies available. For more information contact BETE Technical Services.

A guide with additional engineering data about the SA series is available on request.



Since very small variations in liquid pressure produce large variations in liquid flow, BETE recommends using a metering pump or other flow metering device to control the liquid flow.

AIR ATOMIZING

CALL 413-772-2166
Call for the name of your nearest BETE representative.

SA Set-Up Flow Rates
Narrow, Wide and Flat Fan Patterns 1" and 1 1/2" BSP or NPT

BSP NPT	Spiral Tip Rating	1.0 Bar Air			2.0 Bar Air			3.0 Bar Air			4.0 Bar Air			5.0 Bar Air			6.0 Bar Air			7.0 Bar Air					
		liquid (l/min)	liquid (bar)	air (Nm ³ /h)	liquid (l/min)	liquid (bar)	air (Nm ³ /h)	liquid (l/min)	liquid (bar)	air (Nm ³ /h)	liquid (l/min)	liquid (bar)	air (Nm ³ /h)	liquid (l/min)	liquid (bar)	air (Nm ³ /h)	liquid (l/min)	liquid (bar)	air (Nm ³ /h)	liquid (l/min)	liquid (bar)	air (Nm ³ /h)			
1"	14	2	0.9	25.0	2	1.9	45.0	2	2.8	60.2	2	3.7	86.3	2	4.6	105	2	5.7	137	2	6.4	149			
		3	0.9	20.2	3	1.9	39.0	3	2.8	56.8	3	3.8	79.8	3	4.7	97.9	3	5.7	135	3	6.5	146			
		4	1.0	17.3	4	2.0	29.1	4	2.9	50.8	4	3.8	73.0	4	4.8	88.9	4	5.9	123	4	6.5	134			
		5			5	2.0	26.8	5	3.0	43.8	5	3.9	64.8	5	4.8	82.6	5	5.9	110	5	6.6	117			
		6			6	2.1	24.4	6	3.0	41.2	6	3.9	57.9	6	4.9	78.3	6	6.1	100	6	6.7	112			
		7			7	2.1	21.9	7	3.0	38.5	7	4.0	53.2	7	5.0	69.9	7	6.2	94.9	7	6.8	107			
	20	8			8			8	3.1	35.4	8	4.1	49.9	8	5.0	66.7	8	6.2	88.9	8	6.9	100			
		11			11	1.5	64.4	11	2.4	91.7	11	3.2	117	11	4.0	140	11	4.8	161	11	5.6	180			
		15	0.2	34.9	15	1.7	45.9	15	2.6	68.1	15	3.5	91.0	15	4.4	114	15	5.2	139	15	6.0	163			
		19	0.8	24.3	19	1.9	35.8	19	2.9	56.3	19	3.8	78.0	19	4.6	101	19	5.3	125	19	6.0	151			
		23			23	2.1	26.8	23	3.0	45.8	23	3.9	65.2	23	4.8	85.2	23	5.6	105	23	6.4	126			
		26			26	2.2	23.6	26	3.1	39.0	26	4.1	55.9	26	5.0	74.4	26	5.8	94.3	26	6.7	116			
1 1/2"	28	30			30	2.4	21.8	30	3.3	36.7	30	4.2	51.6	30	5.1	67.2	30	5.9	82.8	30	6.7	98.7			
		34			34	2.4	21.8	34	3.3	36.7	34	4.2	51.6	34	5.1	67.2	34	5.9	82.8	34	6.7	98.7			
		38			38	2.4	21.8	38	3.3	36.7	38	4.2	51.6	38	5.1	67.2	38	5.9	82.8	38	6.7	98.7			
		40			40	2.4	21.8	40	3.3	36.7	40	4.2	51.6	40	5.1	67.2	40	5.9	82.8	40	6.7	98.7			
		45			45	2.4	21.8	45	3.3	36.7	45	4.2	51.6	45	5.1	67.2	45	5.9	82.8	45	6.7	98.7			
		50			50	2.4	21.8	50	3.3	36.7	50	4.2	51.6	50	5.1	67.2	50	5.9	82.8	50	6.7	98.7			
		55			55	2.4	21.8	55	3.3	36.7	55	4.2	51.6	55	5.1	67.2	55	5.9	82.8	55	6.7	98.7			
		60			60	2.4	21.8	60	3.3	36.7	60	4.2	51.6	60	5.1	67.2	60	5.9	82.8	60	6.7	98.7			
65			65	2.4	21.8	65	3.3	36.7	65	4.2	51.6	65	5.1	67.2	65	5.9	82.8	65	6.7	98.7					
70			70	2.4	21.8	70	3.3	36.7	70	4.2	51.6	70	5.1	67.2	70	5.9	82.8	70	6.7	98.7					
75			75	2.4	21.8	75	3.3	36.7	75	4.2	51.6	75	5.1	67.2	75	5.9	82.8	75	6.7	98.7					
80			80	2.4	21.8	80	3.3	36.7	80	4.2	51.6	80	5.1	67.2	80	5.9	82.8	80	6.7	98.7					

Standard Materials: 316 Stainless Steel with Cobalt Alloy 6 wear components. See chart on page 21 for complete list.